

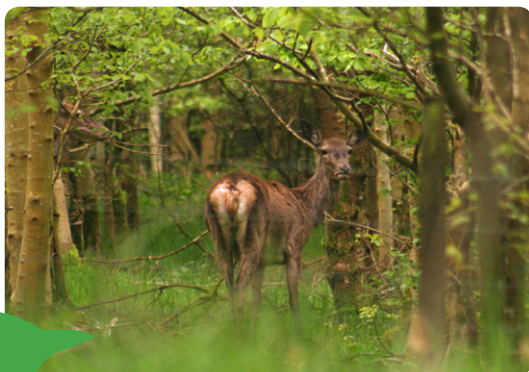
# Get wild about Devon at Huxtable Farm

West Buckland, Barnstaple, Devon EX32 0SR

t 01598 760254

e [jackie@huxtablefarm.co.uk](mailto:jackie@huxtablefarm.co.uk)

w [www.huxtablefarm.co.uk](http://www.huxtablefarm.co.uk)



Huxtable Farm offers quality bed and breakfast accommodation in its beautiful Mediaeval Longhouse and converted barns.

It is set in 80 acres of land; 40 acres of mixed soft and hard wood woodland planted in 1994 and 40 acres of pasture (grazed by a flock of Jacob sheep, lambing in April) including a steep slope of scrub bracken, a small fruit garden and wetland habitats including a pond and stream.

Enjoy the Devon Wildlife Farm Trail following a way marked route covering a huge range of wildlife habitats, with panoramic views over open countryside towards Exmoor and Dartmoor, and resting points with picnic tables or benches.

## Get wild about Devon

is a wildlife appreciation scheme for tourism businesses in Devon who are serious about proactively improving wildlife as part of their business. The scheme is supported by Devon County Council on behalf of Visit Devon.

[www.visitdevon.co.uk](http://www.visitdevon.co.uk)





## Huxtable Farm walk

**Bats.** During the summer evenings watch the bats flitting around the buildings and listen out for the tawny owl. During late spring swallows and house martins nest in the eaves of the buildings and dive over the roofs.

**Wild strawberries** can be seen growing in the banks of strawberry lane in June.

Look out for **Exmoor red deer** and **roe deer** in the woodland and hares, rabbits, pheasants and partridge grassing in the lane's grassy verge.

### Key

- Gate
- Style
- Picnic table
- Bench

**Tawny owl** nest box which is used for nesting.

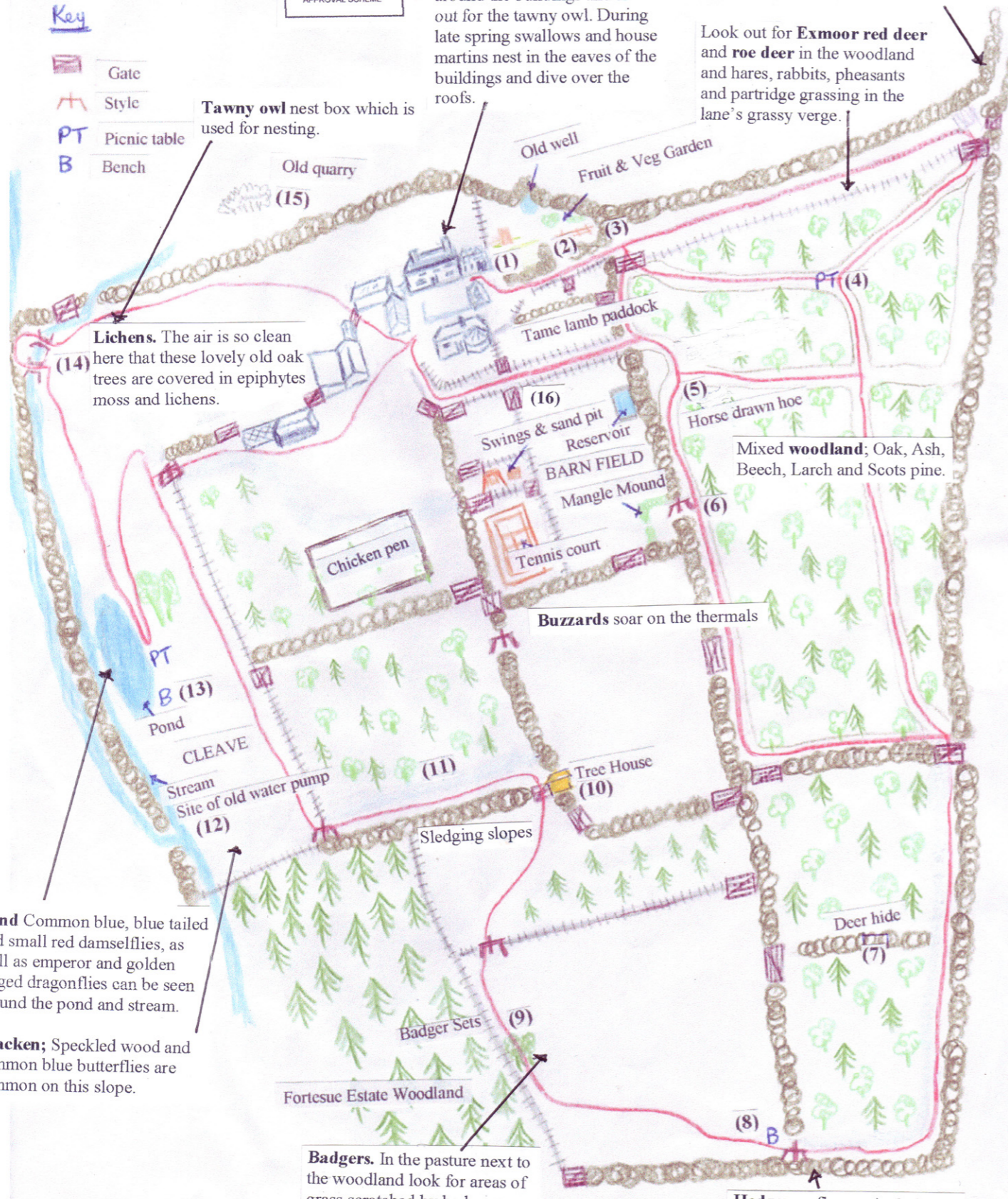
**Lichens.** The air is so clean here that these lovely old oak trees are covered in epiphytes moss and lichens.

**Pond** Common blue, blue tailed and small red damselflies, as well as emperor and golden ringed dragonflies can be seen around the pond and stream.

**Bracken;** Speckled wood and common blue butterflies are common on this slope.

**Badgers.** In the pasture next to the woodland look for areas of grass scratched by badgers looking for one of their favorite foods; crane flies.

**Hedgerow** flowers include; red campion, navelwort, vetch, foxgloves, wild garlic & herb robert



## Wildlife places of interest nearby

### Uppacott Wood Nearest Town: Barnstaple, OS Map: SS 555 283

Uppacott Wood was left to DWT in November 1998 by the late Mr Eustace Ian Scott. According to the ground flora the site appears to be ancient woodland, but the current canopy consists of trees between 100 to 150 years old.

### Swanpool Marsh nature reserve Nearest Town: Braunton, OS Map: SS 473 367

Swanpool Marsh nature reserve forms part of the Braunton Swanpool coastal marshland Site of Special Scientific Interest and was purchased by the Devon Wildlife Trust in 1988. The reserve is a small area of coastal grassland and marsh, habitats once common in this area but now much diminished. Being close to sea level and poorly drained, the water table is at or near the surface for much of the year.

### Rackenford and Knowstone Moors Nearest Town: South Molton, OS Map: SS 858 211

Location and access: Public access to the reserve is unrestricted with several suitable parking points scattered around the site. Approach the reserve from the A361 (North Devon Link Road). You will see the reserve on either side of the road approximately 14km (9 miles) from Tiverton; small picnic/parking areas are signposted on either side of the road at Moortown Cross. Knowstone Inner Moor can be accessed by taking the Knowstone turning; drive past the parking area and over the cattle grid and park on the right by the large gateway opposite the turning to Knowstone (SS 835 219). For Rackenford and Knowstone Outer Moors turn off towards Rose Ash, then turn immediately left, driving past the parking area. Knowstone outer moor lies on the left after you pass "Little Oak", park along the road where space allows. For Rackenford Moor carry on up the Hill, turning left at Hares Down Cross (SS 844 206) and carrying along until you pass over the A361. Park on the right near the gateway just beyond this (SS 852 211), and access the reserve from here. Alternatively, carry on past here, turn right at the junction (after "Kents") and follow the road until you reach "Bickham Barton" on your left - a gateway lies on your right which leads on to the reserve (SS 864 207). We encourage visitors to use environmentally friendly forms of transport wherever possible. Most of our reserves are easily accessible by bicycle, with many close to the National Cycle Network.

### Stowford Moor Nearest Town: Bideford, OS Map: SS 391 161

Stowford Moor is a Culm Grassland site purchased in 1999 by the Devon Wildlife Trust. With grants from English nature, an anonymous donor and donations from DWT members after an appeal towards the purchase price, the site was saved from land improvement and thus the loss of one of the most important wildlife habitats in Devon.

### Meshaw Moor Nearest Town: South Molton, OS Map: SS 761 182

Meshaw Moor was purchased by the Devon Wildlife Trust in 1994, almost certainly saving this remarkable culm grassland smallholding from agricultural improvement.

Location and access: From Tiverton take the B3137 towards Witheridge. Drive through Witheridge and on towards South Molton. After approximately 5km (3 miles) turn left at Gidley Cross (there is a telephone box on the right) and then right at the next crossroads. The nature reserve lies on the left after about 1km (0.6 miles), there is a small hardstanding area immediately before "Moor Tenement" and Meshaw Moor Cross (SS 761 185).

The North Devon Biosphere. North Devon has always been one of the finest unspoilt locations in the UK and is now home to Britain's first new style world class UNESCO Biosphere Reserve, where conservation and sustainable development go hand in hand. The UNESCO, accolade has been awarded on the basis that this place can demonstrate a high quality environment where there is a community that is willing to develop in harmony with that environment. It not just about dunes! The area's designation was based not just on the fact we have the amazing dune system managed by Christie Estates for many generations; but the Biosphere Reserve covers the entire northern half of Devon where we have a whole mix of internationally important interlinked habitats and a caring community, supported by Devon County Council, North Devon District Council and Torridge District Council. <http://www.northdevonbiosphere.org.uk>

### Exmoor National Park

Exmoor National Park was created in 1954: To conserve and enhance the natural beauty, wildlife and cultural heritage of the National Park and to promote opportunities for the understanding and enjoyment of the special qualities of the Park by the public

Stunning landscapes, wilderness and tranquility, rare in southern England, and a warm rural welcome await you on Exmoor, one of Britain's hidden treasures. These, and a glimpse of wild red deer or the native Exmoor Pony, are just some of the delights that make Exmoor special. Visit [www.exmoor-nationalpark.gov.uk](http://www.exmoor-nationalpark.gov.uk)

# Huxtable Farm

[www.visitdevon.co.uk](http://www.visitdevon.co.uk)

# Species List

## at Huxtable Farm

### Trees & Shrubs

Ash  
 Apple  
 Apricot  
 Beech  
 Black alder  
 Blackthorn  
 Cherry  
 Copper beech  
 Douglass Fir  
 Elder  
 Eucalyptus  
 Fig  
 Field Maple  
 Hawthorn  
 Hazel  
 Holly  
 Horse chestnut  
 Laburnam  
 Larch  
 Lime  
 Mountain Ash  
 Norway Spruce  
 Oak Pedunculate  
 Oak Sessile  
 Pear  
 Plum  
 Rowan  
 Scotts pine  
 Silver birch  
 Spindle  
 Sycamore  
 Willow  
 Weeping willow  
 Yew

### Ferns

Bracken  
 Broad buckler fern  
 Hard fern  
 Hats tongue fern  
 Lady fern  
 Male fern  
 Polypody fern  
 Scaly male fern  
 Soft sheild fern  
 Spleenwort

### Mammals

Badger  
 Bank vole  
 Common shrew  
 Dormouse  
 Field mouse  
 Fox  
 Grey squirrel  
 Hare  
 Lesser horseshoe bat  
 Otter  
 Pipistrelle bat  
 Rabbit  
 Red deer  
 Roe deer  
 Stoat  
 Wood mouse

### Reptiles & Amphibians

Common lizard  
 Frog  
 Grass snake  
 Palmate newt  
 Slow worm  
 Toad

### Birds

Barn owl  
 Blackbird  
 Blackcap  
 Blackheaded gull  
 Blue tit  
 Bullfinch  
 Buzzard  
 Canada goose  
 Carrion crow  
 Chaffinch  
 Chiffchaff  
 Coal tit  
 Cuckoo  
 Dunnock  
 Garden warbler  
 Goldfinch  
 Great tit  
 Greater spotted woodpecker  
 Greenfinch

Green woodpecker  
 Grey wagtail  
 Herring gull  
 Heron  
 House martin  
 House sparrow  
 Jackdaw  
 Jay  
 Lesser black backed gull  
 Linnet  
 Log tail tit  
 Magpie  
 Mallard  
 Marsh tit  
 Mistle thrush  
 Moorhen  
 Nuthatch  
 Oystercatcher  
 Partridge – red legged  
 Pheasant  
 Pied wagtail  
 Redwing  
 Robin  
 Rook  
 Skylark  
 Song thrush  
 Sparrow hawk  
 Spotted flycatcher  
 Stock dove  
 Swallow  
 Tawny owl  
 Swift  
 Whitethroat  
 Willow warbler  
 Woodcock  
 Wood pigeon  
 Wren

### Butterflies & Dragonflies

Brimstone  
 Comma  
 Common blue  
 Emperor dragonfly  
 Golden tailed dragonfly  
 Large white  
 Orange tip

Red admiral  
 Small white  
 Speckled wood

### Plants

Angelica  
 Annual meadow grass  
 Betony  
 Blackberry  
 Blackcurrant  
 Bluebell  
 Bramble  
 Bugle  
 Broom  
 Broad leaf dock  
 Bullrush  
 Burdock  
 Cleavers  
 Cocksfoot  
 Common birds-foot-trefoil  
 Common dog violet  
 Common mouse-ear  
 Common knapweed  
 Common sorrel  
 Cow parsley  
 Creeping buttercup  
 Creeping thistle  
 Cuckoo-flower  
 Daisy  
 Dandelion  
 Dog's mercury  
 Dog rose  
 Enchanters nightshade  
 Eye bright  
 Figwort  
 For get me not  
 Foxglove  
 Germander speedwell  
 Giant hogweed  
 Giant rhubarb  
 Gooseberry  
 Gorse  
 Greater plantain  
 Greater sedge  
 Greater stitchwort  
 Ground ivy

Hairy bittercress  
 Hedge woundwort  
 Herb Bennet  
 Herb Robert  
 Hogweed  
 Honeysuckle  
 Ivy  
 Ivy leaved speedwell-lilac  
 Lesser celandine  
 Lesser Plantain  
 Loganberry  
 Lords and ladies  
 Navelwort  
 Marsh bedstraw  
 Marsh marigold  
 Nettles  
 Oval sedge  
 Pignut  
 Primrose  
 Ragged robin  
 Raspberry  
 Red campion  
 Red clover  
 Redcurrant  
 Rhododendron  
 Snowdrop  
 Sticky mouse-ear  
 Timothy  
 Vetch  
 Water dropwort  
 hemlock  
 Water mint  
 Wild garlic  
 Wild strawberry  
 Wood sorrell  
 Yarrow  
 Yellow flag iris  
 Yorkshire fog